

Robot handling



We don't want to live without it

Automation, daily comfort.

Although we are surrounded by modern automation and state-of-the-art gadgets in our daily lives, robots do still fascinate us and tickle our imagination. Especially if they are designed to look and act like humans. In modern industry robotisation is a common phenomenon with designs of robots that are fully dictated by the functionalities desired.

Willems embraces that new possibilities and uses robots to perform many specific tasks. Time after time.



02 03	Introduction and automation in daily life
04 05	Index
06 07	Unique specifications
08 09	Robot handling
10 11	Industrial robot operations
12 13	Kawasaki robots
14 15	Fanuc robots
16 17	Special features
18 19	Stack & Wrap
20 21	Pallet handling & transport
22 23	Touch screen management
24 25	Service and parts
26 27	Willems innovations and history



Industrial robots

Industrial robots are specially designed, equipped and programmed, to perform their (complicated) tasks, for example in the production of cars. They weld, spray and assemble and shape sheets of metal to a real car. Also in the packaging industry, robots are indispensable in packing, stacking and wrapping. Safe, fast and accurate.... always. What could we do without them?



Reliable alternative for human power

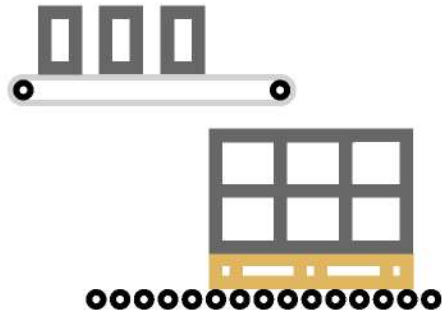


24/7 around the clock



PLC-control and long distance servicing

UNIQUE SPECIFICATIONS



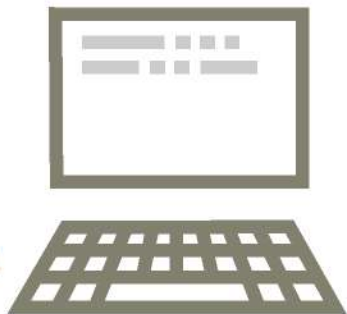
Efficient production and pallet handling



Multifunctional and accurate



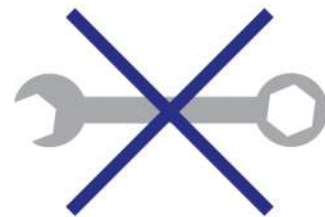
Safe work spaces



Fully programmable



Many robots can operate in line



Minimal maintenance



Willems is manufacturer of robot palletising lines. We build machines and transportation systems for handling of bales and other goods. We use the best quality machines with the highest precision on the market. Our production is fitted with the finest equipment, which allows them to work accurately and efficiently. We employ highly-qualified specialists and utilise extremely advanced facilities for designing, fabricating, assembling, and thoroughly testing our machines and transportation systems. Our experts have a lot of experience designing and developing complete robot palletising lines.

Willems Baling Equipment was established in 1992. With pride we are looking back at many successes in designing and developing the ultimate packaging machines. When the ideas of experienced engineers and creative young designers meet, special things are happening. Together we generate a massive capacity in solving complex packaging challenges. Every day. And... the best is yet to come.

Robot handling

Willems
baling equipment


Since 1997, Willems Baling Equipment is official dealer of Palletising Robots. During this period Willems has built up a broad experience in handling bales, bags, boxes and pallets. We have already built more than 200 robot palletisation installations.

The industrial robots are designed specifically for palletising and is equipped with the latest technology to meet the demands of users. Operators without special skills can program and operate the Kawasaki robot after a short and basic training of our engineers.

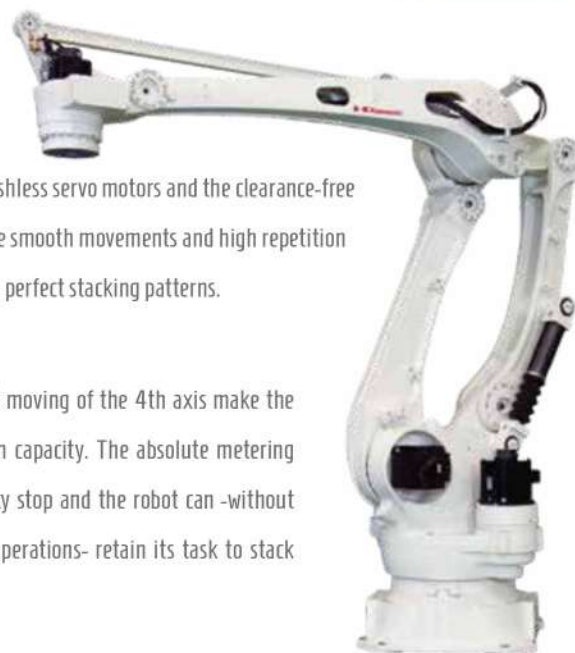
The palletisation program can be easily manufactured by using the user-friendly palletising menus. For a full pallet load, only a few values such as the number of layers, number of rows, number of columns, and product dimensions need to be entered.

The robot's motion pattern is very precise, thanks to the high-resolution position encoders, AC brushless servo motors and the clearance-free precision cycling transmissions. Due to the smooth movements and high repetition accuracy, the robot is capable of achieving perfect stacking patterns.

The high speed of the robot and the fast moving of the 4th axis make the robot to a machine with high production capacity. The absolute metering system allows, for example, an emergency stop and the robot can -without synchronisation or other programming operations- retain its task to stack directly on the position where it stopped.

Simple & friendly

Kawasaki
Robotics

FANUC
Robotics





Industrial robots can be used for many different operations. Which can be carried out with extreme precision and ultimate operation reliability; time-after-time.

Such as:
STACKING TURNING POSITIONING
MOVING WELDING PICKING SPRAYING
MOUNTING EXCHANGING FIXING
ASSEMBLING et cetera...



Check our website for further details





Kawasaki is one of the world leading manufacturers of industrial robots

CP

Simple & friendly
Kawasaki
Robotics

Industrial robots in 3 different types:

CP-180

- tilting capacity up to 100 kg
- equipped with vacuum head or gripper
- single vacuum head: up to 700 bales/hour
- double vacuum head: up to 1,000 bales/hour
- triple vacuum head: up to 1,500 bales/hour

CP-300

- tilting capacity up to 200 kg
- equipped with vacuum head or gripper
- up to 500 units/hour

CP-500

- tilting capacity up to 320 kg
- equipped with hydraulic gripper
- up to 300 units/hour

CP-700

- tilting capacity up to 500 kg
- equipped with hydraulic gripper



Fanuc robot

Willems

baling equipment



FANUC was one of the first robot suppliers to develop a series specifically designed for palletising and draws on years of experience in end of line automation.

M-410

FANUC
Robotics

Industrial robots in 3 different types:

M-410iC/185

- Tilting capacity up to 100 kg
- Equipped with vacuum head or gripper
- Single vacuum head: up to 700 bales/hour
- Double vacuum head: up to 1,000 bales/hour
- Triple vacuum head: up to 1,500 bales/hour

M-410iC/315

- Tilting capacity up to 200 kg
- Equipped with vacuum head or gripper
- Up to 500 units/hour

M-410iC/500

- Tilting capacity up to 320 kg
- Equipped with hydraulic gripper
- Up to 300 units/hour



Special features

Willems
baling equipment



a



b



c



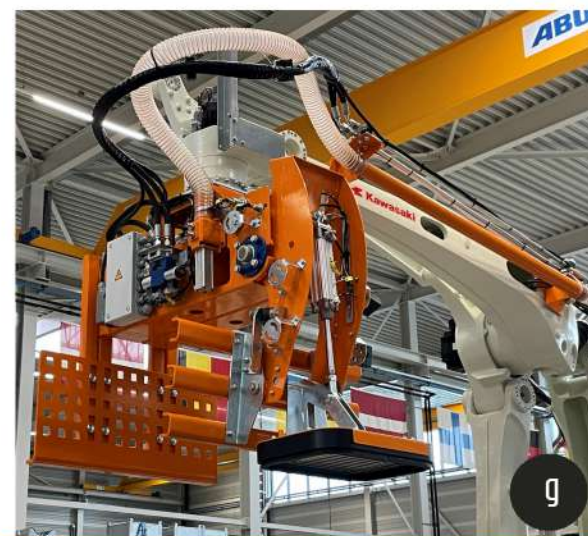
d



e



f



g



h

Robot palletiser lines can be equipped with various features:

- a metal detection
- b turn over
- c pallet dispenser
- d sheet dispenser
- e check weigher
- f lift roller conveyer
- g gripper for bales
- h gripper for rolls

Other features:

- label
- printer
- 90° degrees belt
- barcode checker
- rotating roller conveyer

Stack & Wrap

Willem's
baling equipment



Duoline stack and wrap

Unique in the world. Willem's designed a robot that can stack on 2 positions at the same time. Both of the wrappers work independently from each other and will supply the required amount of film to each stack.



Fully automated
production



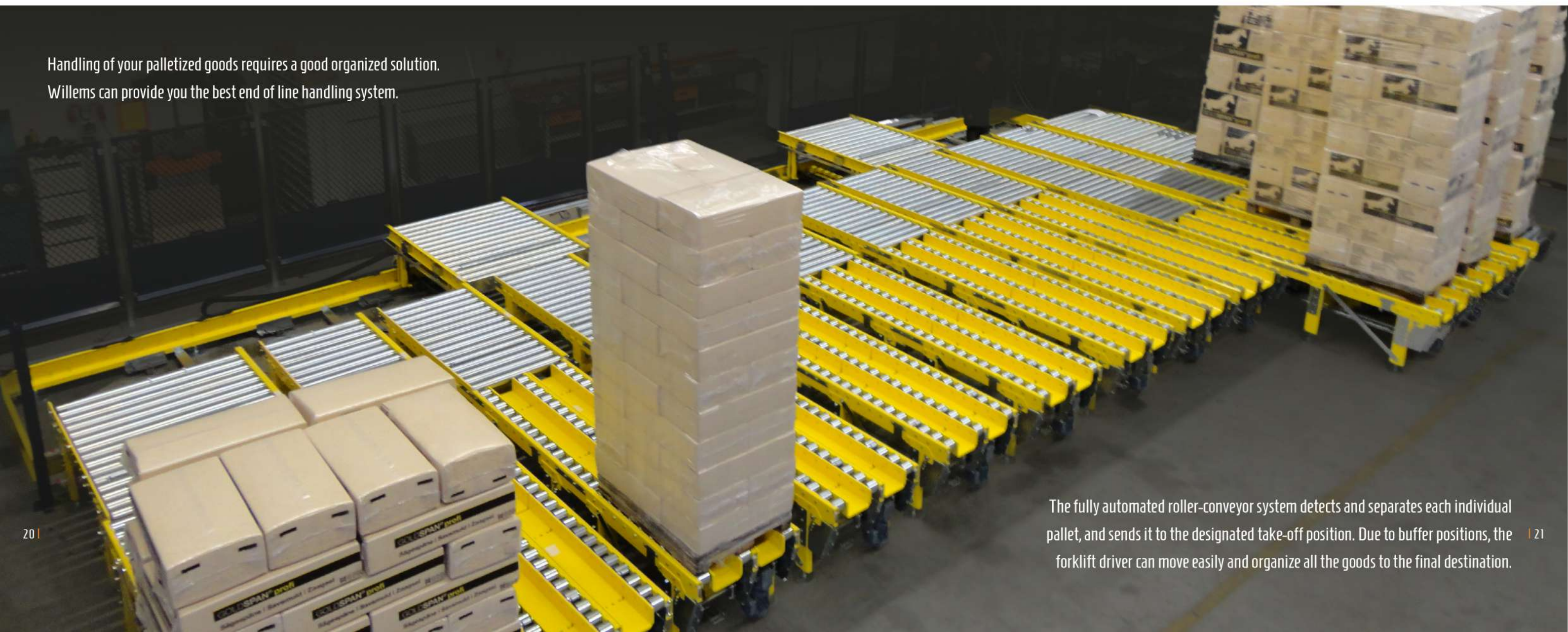
Stack and wrap is a unique way of wrapping bales during the stacking process.

The robot palletiser will place each bale in the desired position. After a finished layer, the wrap will be directly applied. This keeps the stack of bales stable, and in the correct position. Even if the goods are stacked without a pattern or in the case of stacking small bales in high stacks. An optional topsheet can be placed to make the load rainwaterproof for outdoor storage.

Pallet handling & transport

Willems
baling equipment

Handling of your palletized goods requires a good organized solution.
Willems can provide you the best end of line handling system.



The fully automated roller-conveyor system detects and separates each individual pallet, and sends it to the designated take-off position. Due to buffer positions, the forklift driver can move easily and organize all the goods to the final destination.

Touch screen management

Willems
baling equipment



The robot with roller tracks can be operated from the cabinet using the Siemens Touch Screen. By activating the desired item on the color touch screen you will open a menu in which the settings can be changed. The system also contains the advanced Siemens automatic error messaging. The operator's task is to enter only the desired stacking patterns (which are preprogrammed) and the robot is operational.

The clear touch screen shows the entire setup. By selecting the correct icons the desired section is operational and you can easily change the parameters.

Quality

In manufacturing, a measure of excellence or a state of being free from defects, deficiencies and significant variations. It is brought about by strict and consistent commitment to certain standards that achieve uniformity of a product in order to satisfy specific customer or user requirements. ISO standard defines quality as "the totality of features and characteristics of a product or service that bears its ability to satisfy stated or implied needs."

Reliability

1. The ability of an apparatus, machine, or system to consistently perform its intended or required function or mission, on demand and without degradation or failure.
2. Manufacturing: The probability of failure-free performance over an item's useful life, or a specified timeframe, under specified environmental and duty-cycle conditions.

Efficiency

24 | The comparison of what is actually produced or performed with what can be achieved with the same consumption of resources (money, time, labour, etc.). It is an important factor in determination of productivity.

Spare parts Maintenance After sales Responsible partner Teleservice

Willems builds robust machines to last for long. All integrated systems and electronics meet the highest standards so reliability is guaranteed. Our involvement does not stop when the system has been sold. Willems feels responsible for trouble free operation of the total production line. Via built-in modems in machines, we can monitor data online and any malfunctions can be cured or even prevented from a distance. If necessary, we ensure that experienced specialists are available at your location to keep your production line in good condition. Everywhere, worldwide.

Reach us on:



A family owned business



Since its foundation in 1992, **Willems** has grown into one of the industry leaders. Nowadays the Willems brand is synonymous with innovation and top quality. We invest in the latest developments in machine construction. Our designers work on machines that are safer, faster, more efficient and even more precise. Modern techniques and continuous improvements result in reliable machines that meet the highest standards of effectiveness.

All disciplines are represented in our enterprise; designers, constructors, production staff, service engineers. From the first ideas and sketches up to installing and adjusting machines on your location, our professionals are prepared for the job. Brilliant ideas from experienced engineers and creative designers come together to create smarter solutions. Everyday.



Clever design
smart in every small part

Willems
baling equipment

